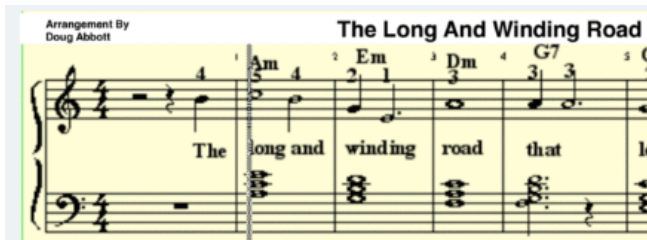


Committee 2024-5

3	President
1	Vice President
5	Secretary
7	Treasurer

1	Pam	Butler
2	Nola	Cavanagh
3	Fin	Collie
4	Stuart	Elder
5	Diane	Fletcher
6	Isabel	Hopkins
7	John	Low
8	Rosemary	McGeachie
9	Jean	McIlwrick
10	Murray	Pfeifer
11	Isabel	Radka
12	Dave	Savage



Coming up for the remainder of the year:

EOY function (Nov 15)

Registration Form - Series 7 2024

Payment methods in order of preference

1. Direct Credit to
Acc: 03 1746 0080910 000
2. EFTPOS
Debit card payment available on the day
3. Cash in an envelope, please, with your name or include this registration form. Amount enclosed \$30 per person

Cash enclosed
Name:
\$

Contact

We prefer to contact you by email. If you have an email address, and we are not aware of it, please let us know.

Spare paper copies of the brochure are always available if you are unable to print one for yourself.

Series Organiser

Diane Fletcher



October - November 2024

Series 7

Roads from Home



Venue:	Windsor Community Church 19 Windsor St
Time:	10.00am
Cost:	\$30 per person

Series 7 - Roads from Home

Session 1 : Friday 18 October

Chasing Carbon - from Fiordland to Siberia

Presenter: *Dr John Hunt*



Bio: John grew up in Invercargill and attended Otago University where he completed a BSc Hons in botany. He worked for the Forest Service, doing animal and vegetation surveys in Southland and joined the Forest Research Institute in Christchurch, now Manaaki Whenua - Landcare Research. He completed a PhD on the role of UV-B radiation on native plants. He has spent most of his working life tracking carbon at different scales from sub cellular to global and now works on the carbon balances of dairy farms.

Session 2 : Friday 1 November

Presenter : *Paddy O'Brien*



Bio: Patric (Paddy) O'Brien, born in Invercargill in 1959, rose from humble beginnings to become a pioneering figure in rugby refereeing.

Educated in Invercargill, he started his working life as a clerk, then joined the Police force in 1978.

After serving as a detective in the New Zealand Police for 17 years, Paddy transitioned to professional rugby in 1996, becoming the world's first full-time referee. Over his career, he officiated 218 first-class matches, including 38 internationals, and earned the title of NZRU Referee of the Year seven times. Recently he was appointed patron of the Police Wing 370 which commenced training in 2023.

In 2005, he was appointed an Officer of the New Zealand Order of Merit for his contributions to rugby. Today, Paddy continues his involvement in the sport as World Rugby's High-Performance Sevens Referee Manager and holds several leadership roles in the Invercargill community.

Session 3 : Friday 8 November

Presenter: *Mrs Julie Peterson*



Bio: Julie Peterson (nee Kean) was raised on a sheep & beef farm in Winton alongside her six siblings. She attended Dominican College Teschemakers as a full boarding student then went on to tertiary study at both Otago and Massey Universities, where she completed a BA in English and a Dip Hort with Distinction.

She has taught and held senior teaching positions throughout the South Island including Head of English at Southland Girls' High School and at Christ's College, and was Deputy Principal at St Margaret's College prior to moving to Hawke's Bay.

Julie is the current Principal of Woodford House in Havelock North, a role she has held since 2015. As one of the top 10 schools and the largest girls' boarding school in New Zealand, Julie leads as an executive school Principal and a high performing CEO of a multi-million dollar institution

Julie's leadership demonstrates the importance of strength and empathy to maximise the educational and commercial outcomes for all stakeholders. Founding the Shine Strengths programme in 2020 reflects her passion for transformational opportunities for young people.



Photo : GoRentals